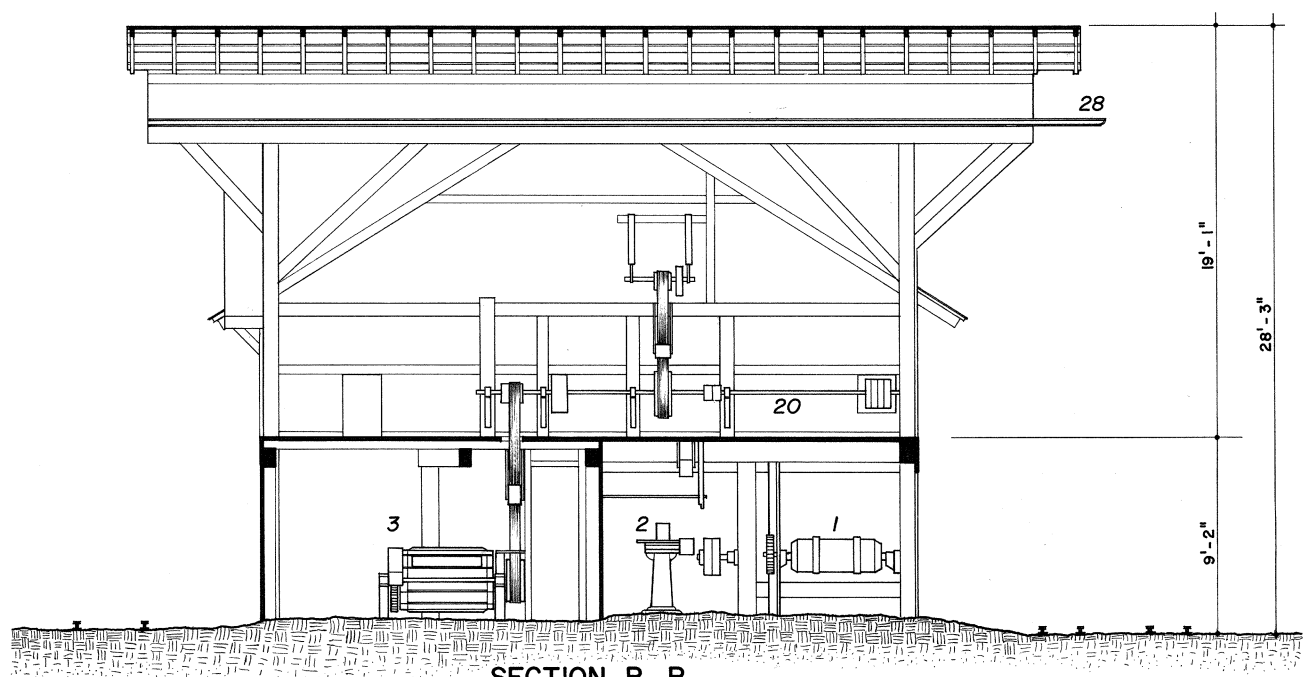


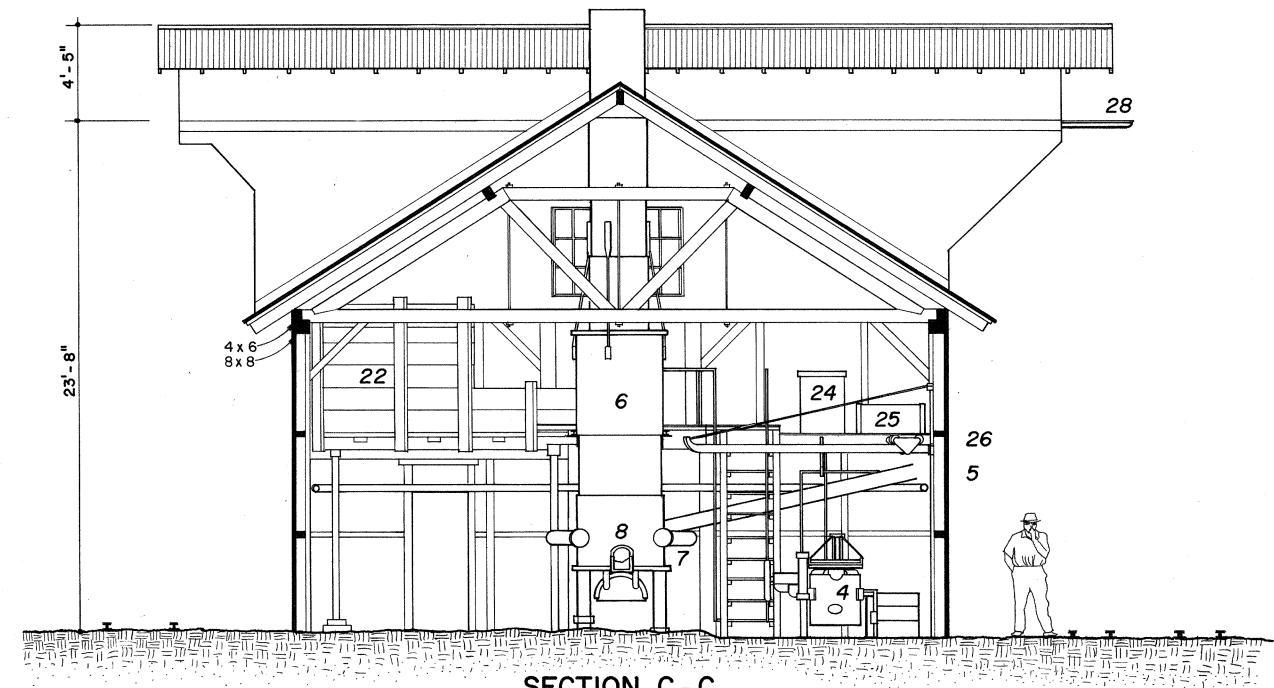
SECTION A-A
LONGITUDINAL SECTION LOOKING WEST

LEGEND

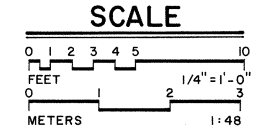
- 1 Outdoor Belt-Driven Casting Tumbler
- 2 Belt-Driven Casting Grinder
- 3 Indoor Belt-Driven Casting Tumbler
- 4 Natural-Draft Brass Melting Crucible
- 5 Cupola Wind Pipe
- 6 Iron Melting Cupola Furnace
- 7 Bustle Pipe
- 8 Hot Metal Runner
- 9 Tuyeres
- 10 Perrottet and Hoyt Wooden Foundry Crane
- 11 Molding Materials Storage Pad
- 12 Moldmaker's Racks
- 13 Core Binder Heater
- 14 Coal-Fired Cross-Draft Core Drying Oven
- 15 Firebox
- 16 Chimney
- 17 Molding Sand Storage Shed
- 18 Outdoor Coke Storage
- 19 Molding Sand Ramming Area
- 20 Belt Drive Shaft for Foundry Equipment
- 21 Storage for Kindling, Scrap Iron
- 22 Coke Storage Bin
- 23 Stairs to Second Level
- 24 Main Oil Tank for Oil-Fired Furnaces
- 25 Air Pressurization Tank for Oil Lines
- 26 Swing-Arm Crane
- 27 Pneumatic Hoist
- 28 Crane Rail



SECTION B-B
TRANSVERSE SECTION LOOKING SOUTH



SECTION C-C
TRANSVERSE SECTION LOOKING SOUTH



DELINEATED BY: ROBERT DIXON, THOMAS M. BEHRENS, 1994
SOUTHWESTERN PENNSYLVANIA RECORDING PROJECT
NATIONAL PARK SERVICE
UNITED STATES DEPARTMENT OF THE INTERIOR

EAST BROAD TOP RAIL ROAD & COAL CO., FOUNDRY c.1885
PA. STATE ROUTE 994 (MEADOW STREET) WEST OF U.S. ROUTE 522
ROCKHILL FURNACE (ORBISONIA) HUNTINGDON COUNTY

HISTORIC AMERICAN ENGINEERING RECORD
PA-127-D

SHEET 2 of 4

PENNSYLVANIA

IF REPRODUCED, PLEASE CREDIT: HISTORIC AMERICAN ENGINEERING RECORD, NATIONAL PARK SERVICE, NAME OF DELINEATOR, DATE OF THE DRAWING