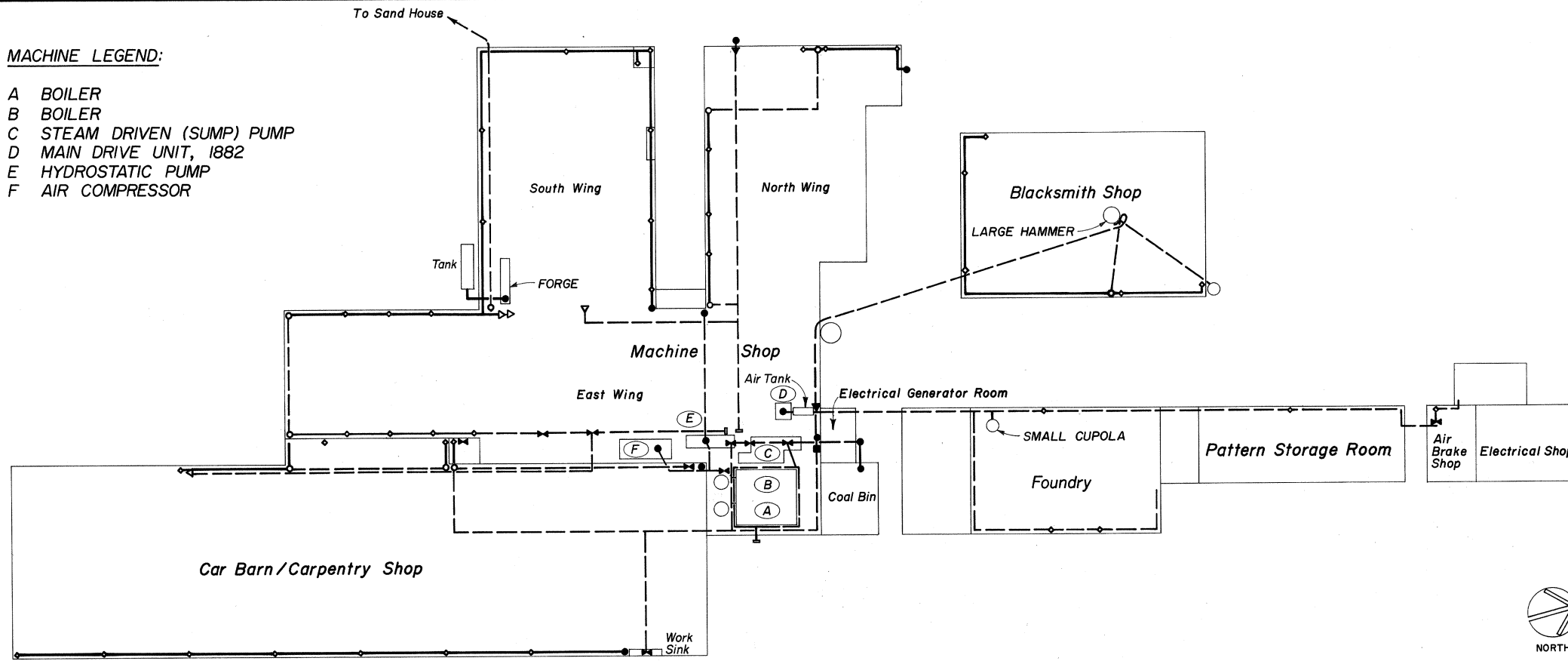


MACHINE LEGEND:

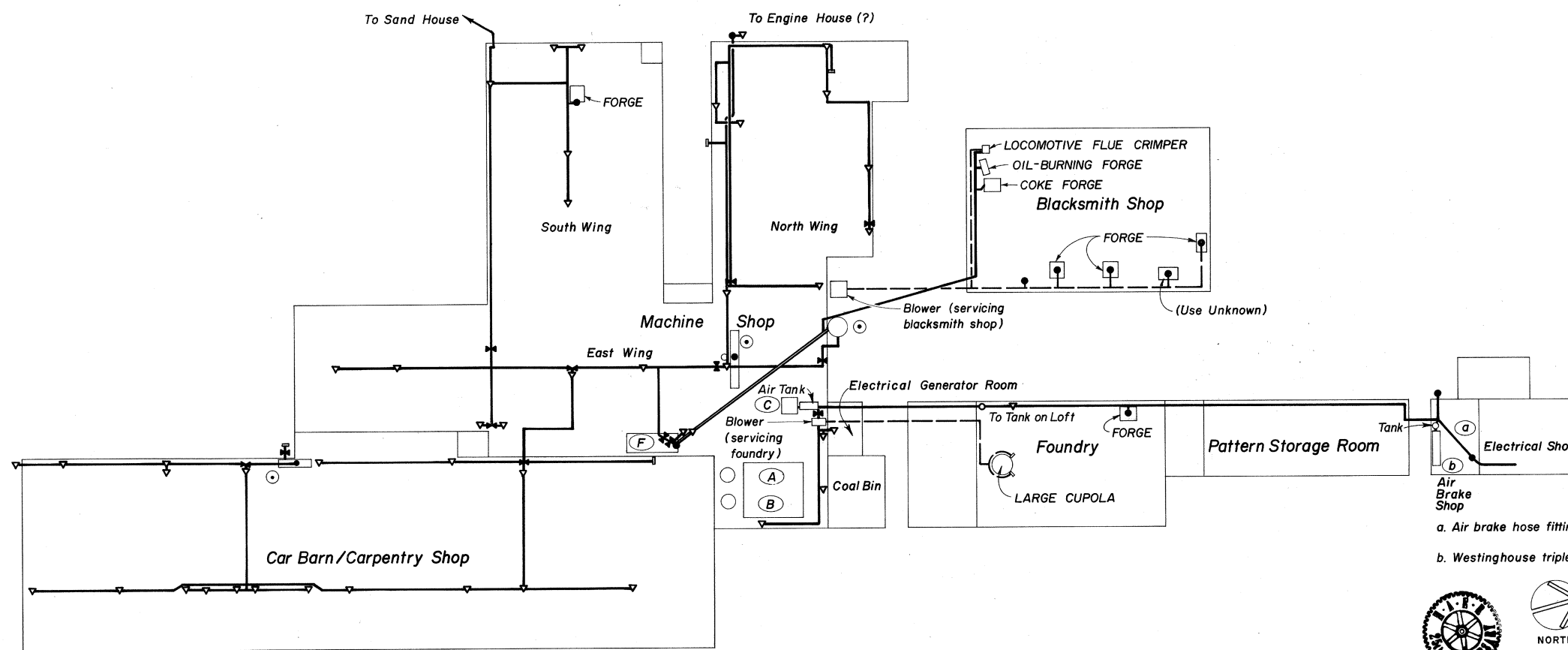
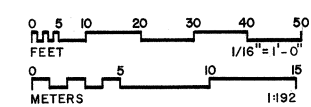
- A BOILER
- B BOILER
- C STEAM DRIVEN (SUMP) PUMP
- D MAIN DRIVE UNIT, 1882
- E HYDROSTATIC PUMP
- F AIR COMPRESSOR



- Overhead Piping
- Piping at Wall
- Connection to Radiation Piping
- Downward Connection (to Floor, Ground or Machine)
- Vertical Pipe
- Stop Valve
- In-line Valve
- Pressure Control Valve
- Gauge
- End of pipe run - Pipe not capped
- Machine Designation See Legend - Sheet 3

SCHEMATIC PLAN

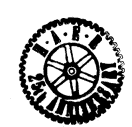
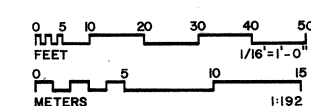
STEAM DISTRIBUTION



- Compressed Air Line
- Fan-circulated Air Line
- Compressed Air Storage Tank
- Downward Connection (to Floor, Ground or Machine)
- Connection Up
- Stop Valve
- In-line valve
- End of pipe run - Pipe not capped
- Machine Designation - See Legend - Sheet 3

SCHEMATIC PLAN

AIR DISTRIBUTION



- a. Air brake hose fitting press
- b. Westinghouse triple valve test rack

DELINEATED BY: ELAINE PIERCE, GEORGE STEINROCK, 1989 SURVEYED BY: RICHARD KOCHAGIAN, ELAINE PIERCE
 EAST BROAD TOP RAILROAD & COAL CO., MACHINE SHOP
 PA. STATE ROUTE 994 (MEADOW STREET), WEST OF U.S. ROUTE 522
 HUNTINGDON COUNTY PENNSYLVANIA
 ROCKHILL FURNACE (ORBISONIA)
 HISTORIC AMERICAN ENGINEERING RECORD
 PA-127-A
 SHEET 5 OF 7

IF REPRODUCED, PLEASE CREDIT: HISTORIC AMERICAN ENGINEERING RECORD, NATIONAL PARK SERVICE, NAME OF DELINEATOR, DATE OF THE DRAWING