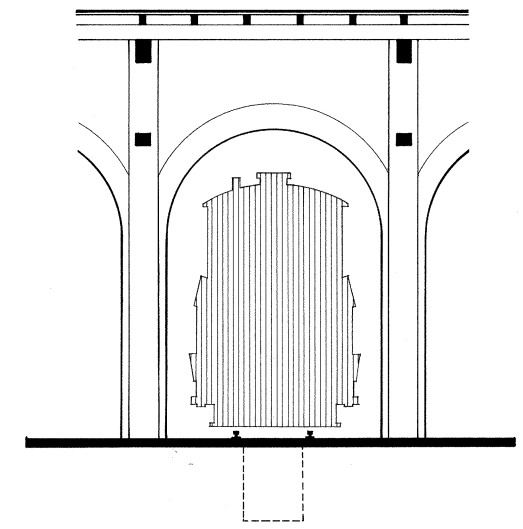
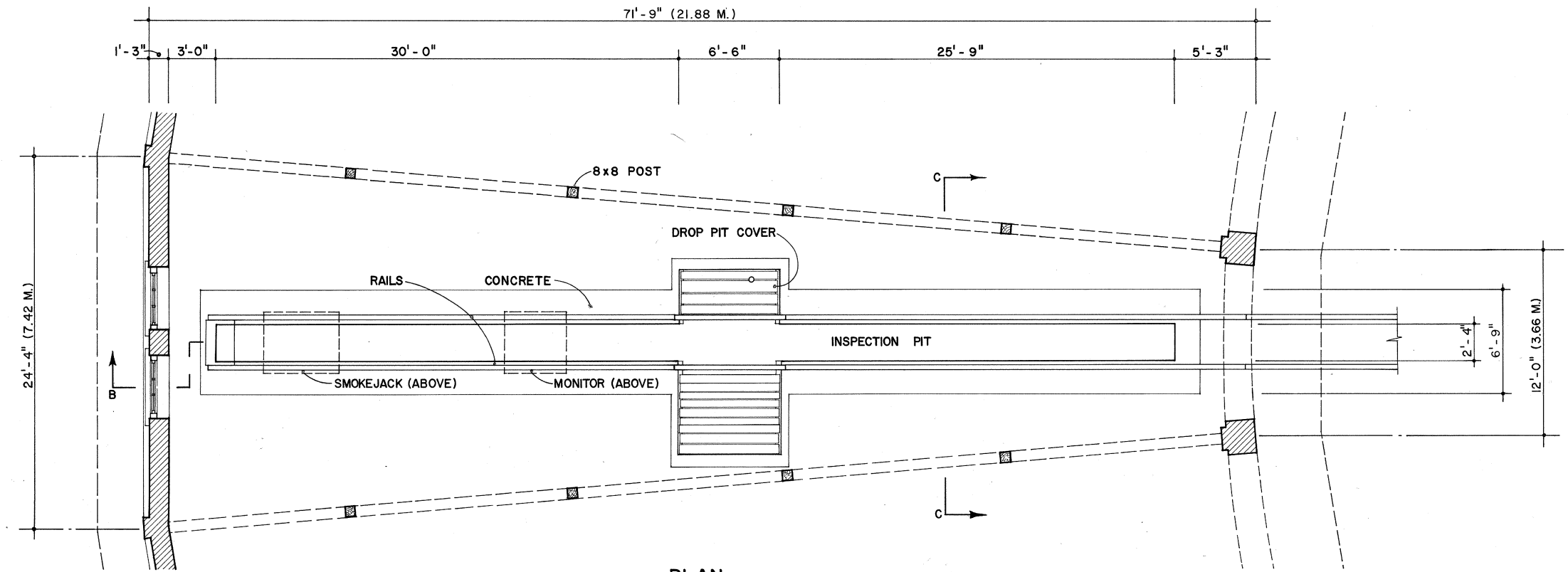


SECTION B-B
STALL NO. 3 LOOKING EAST



SECTION C-C
STALL NO. 3 LOOKING SOUTH



PLAN
STALL NO. 3

- NOTES:**
- SMOKEJACK HEIGHT BASED ON PHOTOGRAPHS.
 - DROP PIT RAILS JOINED TO LOWER LOCOMOTIVE WHEELS.
 - FOR DRAINAGE PURPOSES, INSPECTION PIT SLOPES 8" FROM SOUTH TO NORTH.

ROUNDHOUSE
TYPICAL STALL DETAILS

DELINEATED BY: SUSAN RYAN, ISABEL YANG, THOMAS M. BEHRENS, 1994
 SOUTHWESTERN PENNSYLVANIA RECORDING PROJECT
 NATIONAL PARK SERVICE
 UNITED STATES DEPARTMENT OF THE INTERIOR

IF REPRODUCED, PLEASE CREDIT: HISTORIC AMERICAN ENGINEERING RECORD, NATIONAL PARK SERVICE, NAME OF DELINEATOR, DATE OF THE DRAWING

EAST BROAD TOP RAILROAD & COAL CO., ROUNDHOUSE c.1894
 PA. STATE ROUTE 994 (MEADOW STREET) WEST OF U.S. ROUTE 522
 HUNTINGDON COUNTY PENNSYLVANIA

HISTORIC AMERICAN ENGINEERING RECORD
 SHEET 3 of 5
 PA-127-B