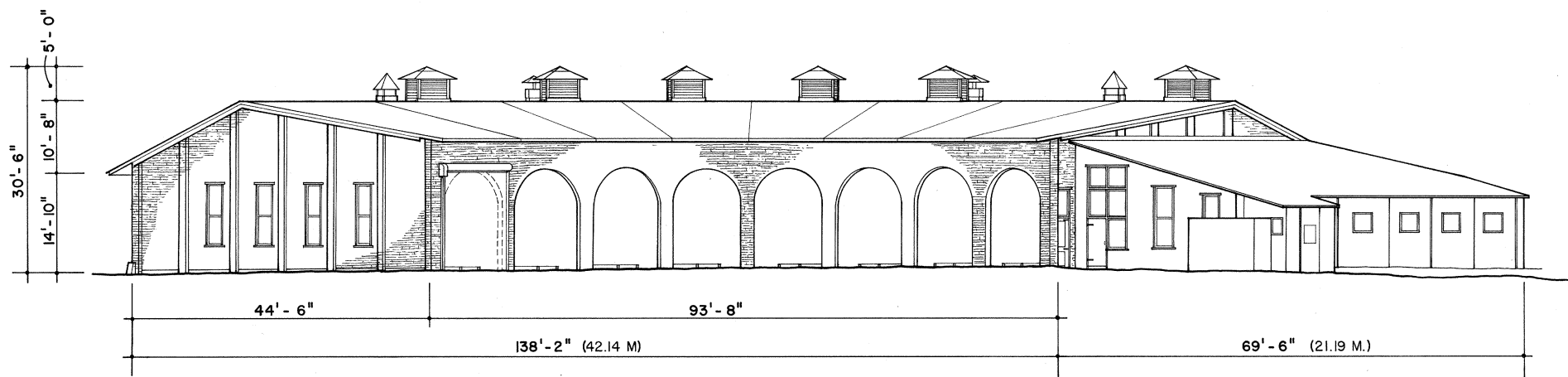
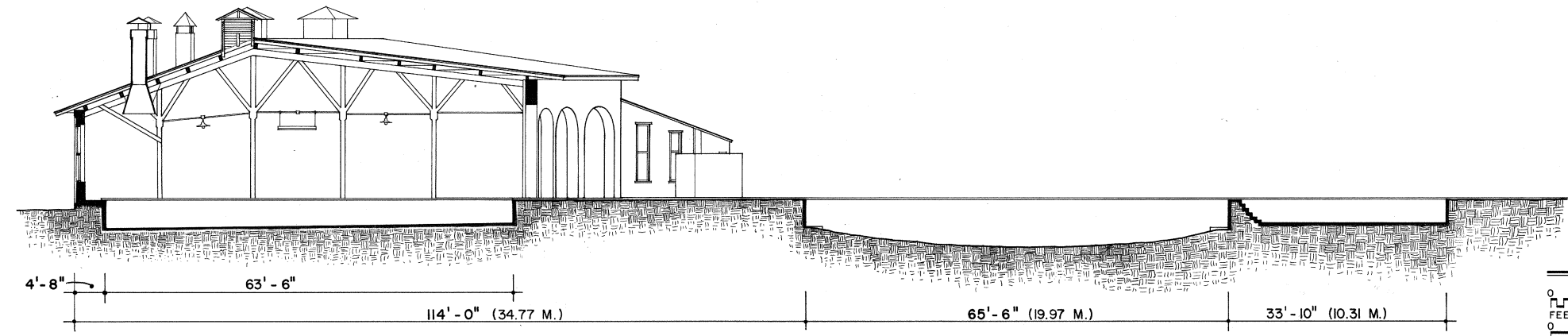


NORTH ELEVATION
ROUNDHOUSE

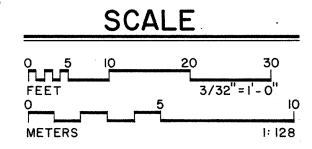
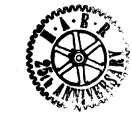


SOUTH ELEVATION
ROUNDHOUSE

NOTE:
 Roll doors on all stalls installed circa 1910, they have been omitted for clarity.
 Smokejack heights based on field photographs.



SECTION A-A
ROUNDHOUSE & TURNTABLE LOOKING EAST



DELINEATED BY: SUSAN RYAN, THOMAS M. BEHRENS, 1994
 SOUTHWESTERN PENNSYLVANIA
 RECORDING PROJECT
 NATIONAL PARK SERVICE
 UNITED STATES DEPARTMENT OF THE INTERIOR

EAST BROAD TOP RAILROAD & COAL CO. ROUNDHOUSE c.1894
 PA. STATE ROUTE 994 (MEADOW STREET) WEST OF U.S. ROUTE 522
 HUNTINGDON COUNTY
 PENNSYLVANIA

HISTORIC AMERICAN
 ENGINEERING RECORD
 PA-127-B

SHEET
 2 of 5

IF REPRODUCED, PLEASE CREDIT: HISTORIC AMERICAN ENGINEERING RECORD, NATIONAL PARK SERVICE, NAME OF DELINEATOR, DATE OF THE DRAWING